

Integration Note

Manufacturer:	VANCO
Model Number(s):	EVSW1042
Driver Version	1.0.2
g! Core Module Version:	8.3 Build 758
Driver Developer:	AVWorld, Inc.
Document Revision Date:	09/01/2019

Overview & Supported Features

This is a two-way driver to control Vanco's EVSW1042 Matrix Switcher from Elan g!.

The Elan controller is capable of controlling the Switcher using serial controls.

THE FOLLOWING OPTIONS ARE SUPPORTED BY [THIS DRIVER]:

- This Driver supports EVSW1042
- Elan HHR and HR10 Remotes

THE FOLLOWING PLAYBACK OPTIONS are not supported by [this driver]:

Any feature not specifically noted as supported should be assumed to be unsupported.

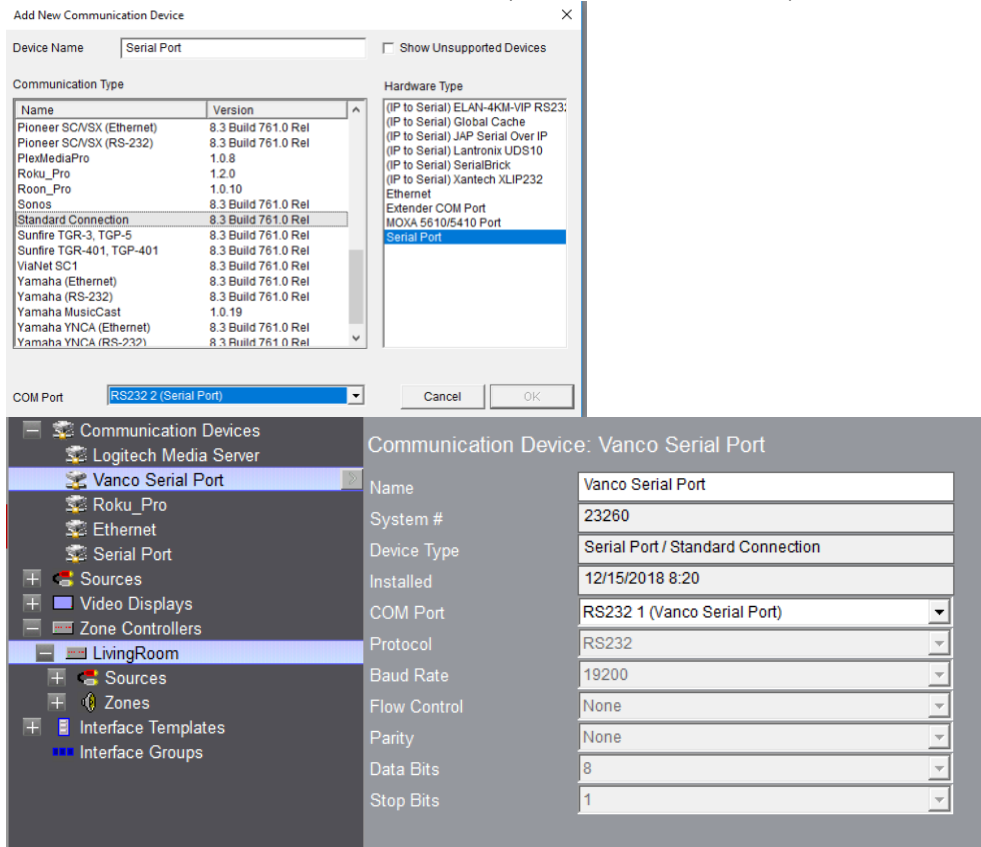
[Driver] Configuration

1. The Driver uses a serial connector. Connect the switcher using a serial cable according to the manufacturer's and Elan's serial port instructions.

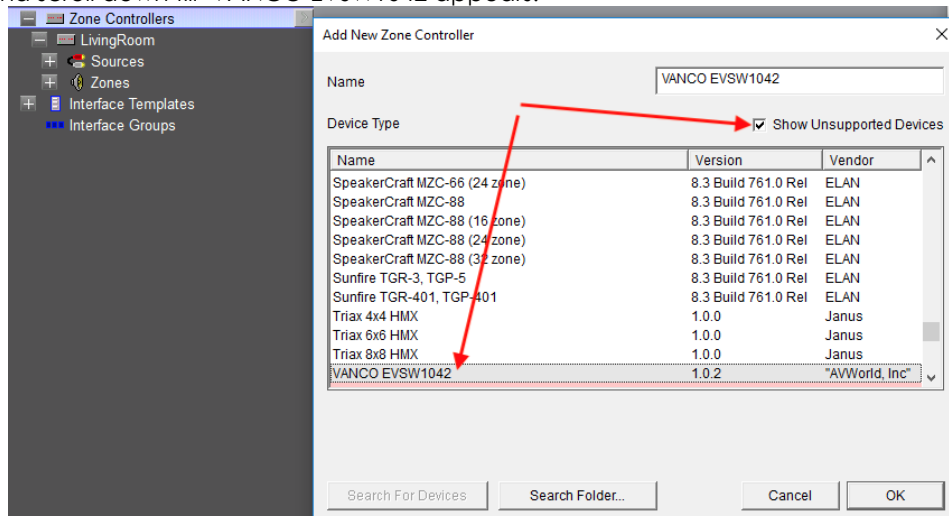


Installation Process

- Under Media, Open Communication Devices and add a serial communication device with the following settings (should automatically populate once the device is connected):
Baud Rate: 19200, Flow Control: None, Parity: None, Data Bits: 8, Stop Bits 1.




- Under Zone Controller, Add a New Zone Controller. Check the box that says Show Unsupported Devices and scroll down till VANCO EVSW1042 appears.



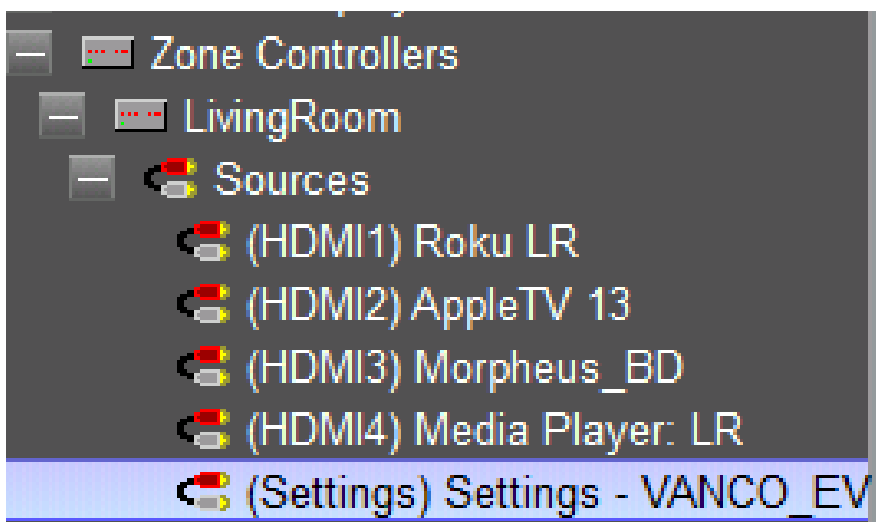
3. Click OK on the warning that this is not a Native Elan driver
4. Choose the serial communication device setup in step 1

Zone Controller : LivingRoom

Name	LivingRoom
System #	7642
Status Color Coding	Enabled
Status	■ Connected
Driver Version	1.0.2
Driver Vendor	"AVWorld, Inc"
Installed	9/5/2019 1:14
Device Type	VANCO EVSW1042
Communication Device	Vanco Serial Port



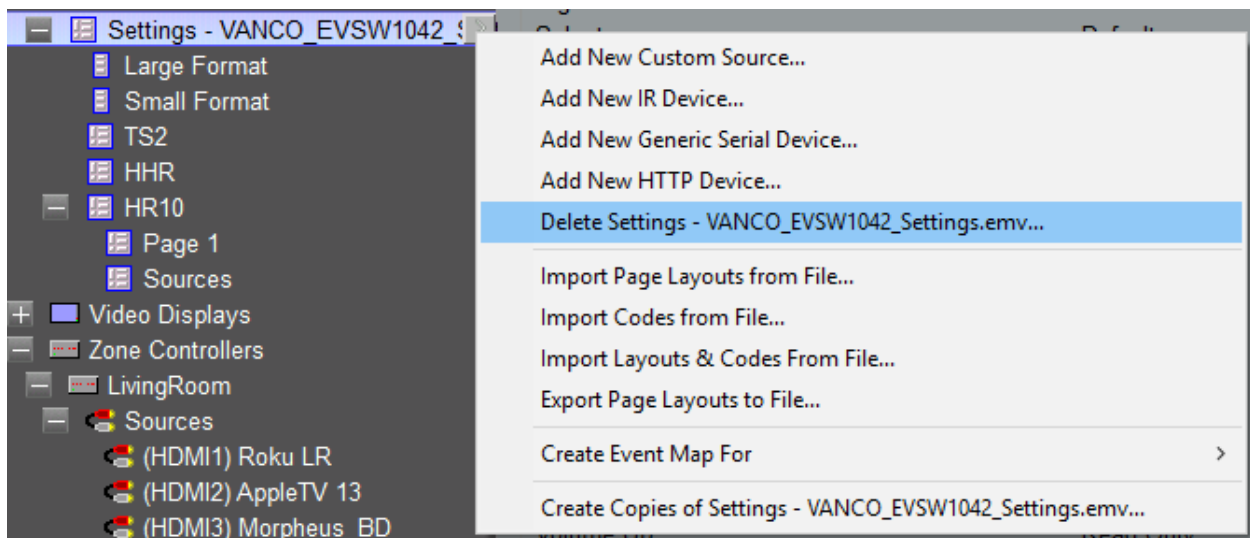
5. 5 Zones will appear. 4 are real and one is virtual. Add the sources to the appropriate HDMI 1 – 4.



6. The Fifth zone is a virtual zone that will display a remote that can be used for testing.



7. The 5th Zone (Settings page) can be deleted without affecting the driver. Alternatively it can be hidden so it doesn't show on the viewer.



THE DRIVER IS READY FOR USE.



Using the Driver

The driver is automatically triggered when picking a zone. The Settings page can be deleted or suppressed so that it doesn't show on the Viewer.

g! CONFIGURATION DETAILS

The following table provides settings used in Configurator ...Please refer to the Configurator Reference Guide for more details.

In the table below:

- "<User Defined>", etc. Type in the desired name for the item.
- "<Auto Detect>", etc. The system will auto detect this variable.

Devices	Variable Name	Settings	Comments
Media	Name	User Defined (Default: VANCO EVSW1042)	
	System #	<Auto Detect>	
	Device Type	Ethernet	
	Driver Name	VANCO EVSW1042	
	Driver Version	<Auto Detect>	

	Driver Vendor	AVWorld, Inc	
	Activation KEY	<User Defined>	
	Communication Device	<User Defined>	
Zone Controller	Display Name	<User Defined> (Default: Player Name)	
	System #	<Auto Detect>	
	Source Device	<User Defined> (Default: Player Name)	

EVENT MAPS

The following variables names can be used in Event Maps:

HDMI1
HDMI2
HDMI3
HDMI4
AutoSwitchOn
AutoSwitchOff
AudioAuto
StereoAudio
DolbyDTS51
HDAudio71
ARCON
ARCOFF

KNOW ISSUES

1. The Settings page only receives confirmation when it's in focus.

ELAN DEVELOPER PARTNER INFORMATION

This ELAN driver is written and supported by:

AVWorld, Inc.

www.avworld.me

support: support@avworld.me